

2020



FOIL BOARDS

USER MANUAL

RELEASE DATE: AUGUST 2019
VERSION: FB01



Thank you for choosing North.

At North we are drawn to nature's ever-changing playground – where water meets wind.

Those two elements create an alchemy that is never the same, one day to the next. It stirs our restless souls, our hearts quicken. It promises us fire within. We chase it.

Every day we are inspired – and humbled - by nature's engineering genius and her beautiful, intuitive simplicity. To that we add cutting-edge technology from the World's best design workrooms and decades of performance expertise.

North is where nature meets technology, in the pursuit of a ride that will lift us out of this world and halfway to another.

This is kiteboarding.

We are North.

RELEASE OF LIABILITY

Releases of liability, claim waiver and assumption of risk:

By assembling and/or using this North Kiteboarding product, you agree that you have read and understood this entire North Kiteboarding product owner manual, including all instructions and warnings, prior to using North Kiteboarding products in any way.

In addition, you agree that you will ensure that any additional or subsequent users of your North Kiteboarding products will read and understand the entire product manual of the North Kiteboarding product, including all instructions and warnings contained in this manual, prior to allowing that person to use your North Kiteboarding product.

ASSUMPTION OF RISK:

In using your North Kiteboarding product and any of its components, you freely agree to assume and accept any known and unknown risks of injury to you and third parties when using this equipment.

The internal risks, dangers and hazards of the sport can be greatly reduced by adhering to the warning guidelines listed in this user's manual and by using common sense.

WARNING:

Use this product at your own risk. Kiteboarding is a HAZARDOUS activity which involves RISKS and DANGERS that are unavoidable and can result in serious bodily injury or death of the user and others. Ensure all parts of your product are thoroughly checked before each use. Download and read the User Manuals and Installation Guides relating to the product before using it. Failure to do so may result in personal injury or death.

RELEASE AND WAIVER OF CLAIMS:

In consideration of the sale of the North Kiteboarding product to you, you hereby agree to the fullest extent permitted by laws as follows;

To waive any and all claims, that you have or may have in the future against North Kiteboarding and all related parties resulting from the use of the North Kiteboarding product and any of its components.

North Kiteboarding and any of its agents are released from any and all liability for any loss, damage, injury or expense that any users of this product may suffer, or that your next in kin may suffer, as a result of the use of this product, including but not limited to negligence, breach of contract in the part of North Kiteboarding, or any of its agents, in the design and manufacture of this product.

SAFETY WARNINGS

For your safety and the safety of others, North Kiteboarding strongly urge you to undergo lessons with a recognised certified instructor prior to using this product. This user manual is **NOT** a substitution to lessons.

Kiteboarding involves unavoidable risks so it is important that you familiarise yourself with these risks and take appropriate measures to minimise risks as much as possible. You should also familiarise yourself with safety precautions and systems related to your equipment.

Kiteboarding is a high-intensity action sport. As such, you should not participate in this sport if you are physically unfit or suffer from any medical conditions that may put you at further risk when kiteboarding.

LIMIT DANGERS TO YOURSELF:

- Be aware of the usual risks associated with water sports such as drowning, rapidly changing conditions, hypothermia, sunburn, fatigue, rocks, waves etc.
- Do not kiteboard in extreme weather and/or rapidly changing conditions such as large storms, thunder etc.
- Check weather reports, local prevailing conditions, tides, and currents prior to launching.
- Do not kite in offshore winds, or strong onshore winds.
- Choose the appropriate kite for your body size, ability and the conditions. Do not use a kite size that is beyond your control for the given conditions. If conditions change while you are kiteboarding and you can no longer control your kite, return to shore.
- When the kite is inflated but not in use, secure the kite in one place with a non-abrasive, heavy object to prevent it from flying away in any sort of conditions.
- Check over all of your equipment prior to launching. Do not launch if lines are knotted, frayed, cut, tangled or damaged in any way.
- Only fly your kite on unobstructed waters. Do not fly your kite over land.
- Be aware of the surroundings prior to launching. Do not fly your kite around power lines, power poles, tall buildings, trees, cliffs, airports etc. Gustly conditions can make launches unpredictable so be cautious of potential collisions with obstacles.
- Always kite with a partner or a supervisor observing you from land.
- Whenever possible use a launch and landing assistant.
- Be familiar with your quick release system and do not be afraid to use it if necessary.
- Always use a safety leash so your kite is contained in case of a primary quick release deployment.
- Keep hands clear of lines when they are under tension from the kite. Lines can be very sharp and abrasive.

- Helmets are strongly recommended to avoid injury from your board or other hard objects.
- We strongly recommend you wear a Personal Flotation Device (PFD) or impact vest while kiteboarding.
- Do not kitesurf, surf or foil in shallow waters or in areas with underwater obstacles.

LIMIT DANGERS TO OTHERS:

- Be courteous to other riders and comply with established give way rules.
- Stay clear of other water users. Leave sufficient space between you and swimmers, boats, paddle boarders and any other water user.
- Familiarise yourself with local marine use guidelines and obey all established rules.
- Respect wildlife and behave accordingly.
- When hydro-foiling you operate at greater speeds than normal and obstacles and other water users get closer exponentially faster. Be aware of this and adjust your actions accordingly.
- Note that this is a non-exhaustive list. Use common sense if other risks arise.

WARRANTY POLICY

+180 WARRANTY

We believe in our products, stand behind our quality and value our customers.

That's why we're giving you an extra 180 days beyond the legal warranty period for your country of purchase, just for registering your product online. Your product must be registered within 60 days of purchase at www.northkb.com, to receive a free extended warranty.

To register your North product simply:

1. Fill out the online registration form at www.northkb.com
2. Have your purchase receipt handy so you can upload it during product registration

FOR ANY WARRANTY CLAIMS PLEASE CONTACT YOUR NORTH KITEBOARDING RETAILER.

NORTH WARRANTY TERMS

This warranty covers new products purchased **ONLY** from an authorized North Kiteboarding centre, retailer or distributor or from the North Kiteboarding website.

North Kiteboarding warrants our products to be free from major defects in material or workmanship to the original purchaser **ONLY**, for a period of 365 days* from the date of purchase.

**Warranty period may vary by country of purchase.*

THIS WARRANTY IS SUBJECT TO THE FOLLOWING LIMITATIONS:

1. Warranty claims within the extended 180 days are valid only when the product is registered and activated in the warranty registration section of www.northkb.com within 60 days of purchase.
2. Warranty registration must be accompanied by the original purchase receipt in which the name of retailer and date of purchase must be clear and legible.
3. Warranty is only valid when the product is used for its normal intended recreational use and will not cover products used in teaching or rental operations, unless this is an official North qualified & affiliated school.
4. North Kiteboarding will make the final warranty determination, which may require inspection and/or photos of the equipment which clearly show defects. If necessary, this information must be sent to your point of purchase, or your country's North Kiteboarding distributor, postage prepaid.
5. If North Kiteboarding deems the product defective, the warranty only covers the repair or replacement of the defective product. North Kiteboarding will not be responsible for any costs, losses or damages incurred as a result of the loss of use of this product.
6. The warranty does not cover damage caused by misuse, abuse, neglect or normal wear or tear including, but not limited to: punctures, rigging with other than North Kiteboarding components, damage due to excessive sun exposure or hot temperatures such as inside an unventilated car, damage due to the product being stored in temperatures exceeding 45 degrees Celsius, damage caused by improper handling and storage, damage caused by use in waves or shore breaks, damage caused by self launching or self landing, damage caused by crashing the kite at high speed, damage caused by the use of kickers, sliders or other such equipment or riding on anything other than water, damage caused by using any inappropriate tools or any tool other than those specified within the installation guides and user manuals, damage caused by neglect of the care and maintenance instructions provided within the Installation Guides and User Manuals.
7. This warranty is void if any repair, change or modification has been made without authorization to any part of the equipment.
8. The warranty for any repaired or replaced equipment is good from the date of the original purchase only.
9. All warranty claims must be accompanied by a digital copy of the original purchase receipt in which the name of the official retailer and date of purchase must be clear and legible.
10. There are no warranties that extend beyond the warranty specified herein.

For any warranty claims please contact your North Kiteboarding retailer. A claim form can be downloaded from northkb.com.

Contact us at

North Kiteboarding
North Actionsports Group
Lageweg 34
2222 AG Katwijk, The Netherlands

CONTENTS

1. Foil Safety	9
2. Foil Board Overview	10
3. Binding Installation	11
4. Foil Board Assembly	11
4.1. Attaching your Sonar Foil System to the North Scoop using the track mounting system	12
4.2 Foil mounting position guide for Scoop	13
4.3. Attaching your Sonar foil System to the Sense and Chase using the 4 point mounting system	13
5. Foil Board Disassembly	14
5.1. Detaching your Sonar Foil System to the North Scoop using the track mounting system	14
5.2. Detaching your Sonar Foil System from the North Sense and Chase	14
6. Board Care	15
7. Serial Number	15

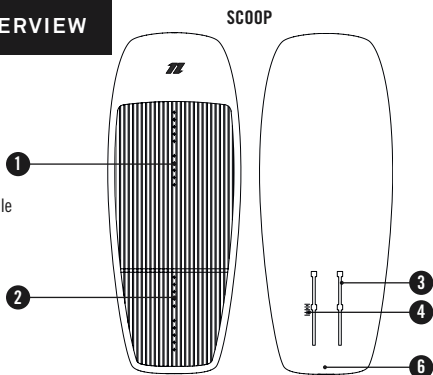
1. FOIL SAFETY

Foiling comes with a unique set of risks and dangers above those inherent to the sport of kiteboarding. In order to keep yourselves and others safe in the water, we recommend you use extra caution and implement these basic safety precautions:

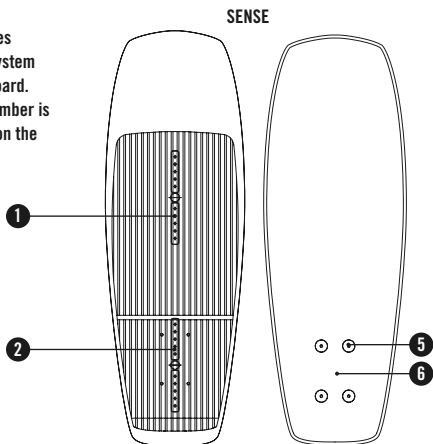
- North kiteboarding strongly recommends kite foil lessons for first-time hydrofoil users. Kite foiling is a dangerous activity and should be treated with caution.
- Check foil screws and components before each use to ensure all connections are tight and in proper working order.
- Do not foil in shallow water, and use extreme caution when foiling near other people and objects.
- We recommend wearing a helmet with ear protection at all times and a wetsuit (especially when learning), to help protect yourself from impacts with your board and foil.
- Be aware that your foil will drift on its own faster and further than a regular board.
- Use care when transporting your foil and foilboard, to ensure the safety of yourself and others, and to protect the longevity of your equipment.
- Use extreme caution when placing your foil and foil board on the beach, as there can be a danger to other kites, general beach users and your own equipment.
- We recommend using a North Kiteboarding wing, stabilizer and mast cover for your Foil-set, to provide maximum protection and longevity of the products.

2. FOIL BOARD OVERVIEW

- 1 - Front Foot Strap Inserts
- 2 - Rear Foot Strap Inserts
- 3 - Track Mounting System
- 4 - Rider Weight Positioning Scale
- 5 - 4 Point Mounting Connection
- 6 - Serial Number



NOTE: The Chase Foil Board uses the same 4 point connection system illustrated on the Sense Foil Board. The Chase Foil Board Serial Number is found in the same location as on the Scoop Foil Board.



3. BINDING INSTALLATION

For binding installation, please see the North Bindings User Manual online at northkb.com.

4. FOIL BOARD ASSEMBLY

The North Sense and Chase Foil Boards have a 165 x 90mm bolt pattern to attach the foil system to the board. The North Scoop Foil Board has a track system that is designed to work with the same 165 x 90 mm bolt pattern.

It is highly likely that other foil systems on the market will be compatible with your North Foil Board however no guarantees can be given. For best results, we recommend using your North Foil Board with the North Sonar Foil System.

ATTACHING YOUR SONAR FOIL TO YOUR FOIL BOARD

Tools Required:

Torx T40 Tool

Please Note: Foil System sold separately. The North Sonar Foil System can be purchased additionally at a North Kiteboarding retailer. Visit www.northkb.com to find your local retailer.

For Foil assembly, please see the North Foil System User Manual online at northkb.com.

Please Note: Sonar Foil System's sold separately. Sonar Foil System's can be purchased additionally at a North Kiteboarding retailer. Visit www.northkb.com to find your local retailer.

WARNING:

Do not use power tools for installation as it may cause damage as control of torque and power is limited. Doing so will render your warranty void.

WARNING:

Over tightening screws can cause irreversible damage to the inserts. Doing so will render your warranty void.

WARNING:

Use a Torx T40 tool. Using the wrong screwdriver will damage the screw head and create sharp edges that will cause harm.

SCOOP FOIL BOARD SCREW SET

4 x M8x30 TH CSK T40
4 x T-Nuts



SENSE/CHASE FOIL BOARD SCREW SET

4 x M8x23 TH CSK T40

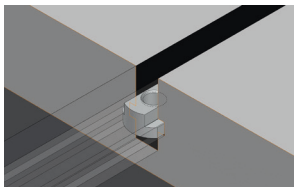


DIAGRAM 1

4.1 ATTACHING YOUR SONAR FOIL SYSTEM TO THE NORTH SCOOP USING THE TRACK MOUNTING SYSTEM

There are two different methods for attaching your Sonar Foil System to your North Scoop Board, based on personal preference. Please read both assembly methods before proceeding with the selected method.

Assembly Method A: T-Nuts pre-inserted into the board tracks

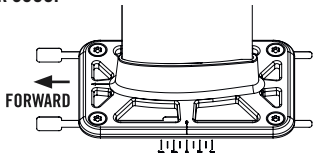
1. Ensure all surfaces are free from dirt or sand prior to assembly. Pay close attention to the Board Adaptor on the foil system and the board tracks.
2. Insert one T-Nut into each track using the central track entry points, ensuring the correct T-Nut orientation is maintained as per the diagram (diagram 1). Slide the T-Nuts towards the tail of the board until they are at the far back end of the tracks.
3. Again, insert one T-Nut into each track using the central track entry points, ensuring the correct orientation is maintained as per diagram (diagram 1). This time, slide the T-Nuts all the way forward towards the nose of the board.
4. Position the Board Adaptor of the assembled foil system parallel to the base of the board, above the tracks. The arrow on the Board Adaptor should be pointing towards the nose of the board.
5. Align the back two screw holes of the Board Adaptor with the two T-Nuts at the back of the tracks.
6. Position two of the screws through the back holes in the Board Adaptor and hand tighten the two screws until they engage with the two back T-Nuts, but are still able to slide in the tracks.
7. Slide the foil system, together with the loosely screwed in back two T-Nuts forward until it lines up with the front two T-Nuts.
8. Position the remaining two screws through the front two holes on the Board Adaptor and tighten the two screws until they engage with the front two T-Nuts but are still able to slide in the tracks.
9. Slide the foil system, together with the loosely tightened screws and T-Nuts, along the tracks into your desired position, using the Foil Mounting Position Guide (**Section 4.2**) as a reference. When you're happy with the positioning, tighten all the screws firmly using the Torx T40 tool in a diagonal sequence until the foil system is fully secured and the screws are firmly tight.

Assembly Method B: T-Nuts pre-fitted onto the foil system

1. Ensure all surfaces are free from dirt or sand prior to assembly. Pay close attention to the Board Adaptor on the foil system and the board tracks.
2. Away from the board, position all four screws through the four holes in the Board Adaptor.
3. One at a time, ensuring the correct orientation is maintained as per the diagram (diagram 1), pre-fit the T-Nuts onto the screws by maintaining light pressure on the screw head with a fingertip whilst winding on one T-Nut by 1-2 full turns.
4. Align the back two T-Nuts (Stabilizer end) so that the flat side of the T-Nut is parallel to the long side of the Board Adaptor.
5. Position the Board Adaptor of the assembled foil system parallel to the base of the board, above the tracks. The arrow on the Board Adaptor should be pointing towards the nose of the board.
6. Insert the back two aligned T-Nuts into the central track entry opening. You may need to perform some minor adjustments to the T-Nut alignment in order for the T-Nuts to locate correctly down into the central track entry opening.
7. Proceed similarly with the front T-Nuts in the front track entry points, make minor adjustments to the alignment of the front two T-Nuts until they locate correctly down into the front track entry points.
8. Slide the foil system, together with the loosely tightened screws and T-Nuts, along the tracks into your desired position, using the Foil Mounting Position Guide (**Section 4.2**). When you're happy with the positioning, tighten all the screws firmly using just your hand initially.
9. Finally, tighten the screws individually using the Torx T40 tool in a diagonal sequence until the foil system is fully secured and the screws are firmly tight.

4.2 FOIL MOUNTING POSITION GUIDE FOR SCOOP

When the rider's body weight is between 75kg and 85kg, align the Board Adaptor 0 mark up with the 0 mark on board scale. For rider's under 75kg slide the foils system further towards the tail of the board and for rider's over 85kg slide the foil system forward of the 0 mark towards the nose of the board.



4.3 ATTACHING YOUR SONAR FOIL SYSTEM TO THE SENSE AND CHASE USING THE 4 POINT MOUNTING SYSTEM

1. Ensure all surfaces are free from dirt or sand prior to assembly. Pay close attention to the Board Adapter on the foil system.
2. Use Chase/Sense Screw Set.
3. Position the Board Adapter of the assembled foil system parallel to the base of the board, above the tracks. The Front Wing of the foil system should be orientated towards the nose of the board and the Stabilizer should be orientated towards the tail of the board.
4. Align all four Board Adapter holes with the four inserts on the board and tighten all the screws firmly using just your hand initially.
5. Finally, tighten the screws using the Torx T40 tool individually in a diagonal sequence until the foil system is fully secured and the screws are firmly tight.

5. FOIL AND BOARD DISASSEMBLY

WARNING:

Do not use power tools for disassembly as it may cause damage as control of torque and power is limited. Doing so will render your warranty void.

5.1 DETACHING YOUR SONAR FOIL SYSTEM TO THE NORTH SCOOP USING THE TRACK MOUNTING SYSTEM

Disassembly Method A: T-Nuts and Screws separated from Sonar Board Adaptor

1. Whilst supporting the foil system, use the Torx T40 tool provided in the Tool Kit to individually loosen the four screws in a diagonal sequence. Once all four screws are completely loose, remove them and separate the foil system from the board.
2. Once the foil system has been carefully and securely set aside, remove the four T-Nuts using both sets of track entry openings on the tracks and store in a safe place or leave them properly fastened to the screws on the foil.

Disassembly Method B: T-Nuts and Screws attached to Sonar Board Adaptor

1. Whilst supporting the foil system, use the Torx T40 tool provided in the Tool Kit to partly loosen the four screws in a diagonal sequence.
2. Once all four screws are loose but still attached to the T-Nuts, slightly lift the foil system up to overcome the surface friction between the board and Sonar Board Adaptor TPU gasket.
3. Lift the foil system forward in the track and gently pull it out of the track once the T-Nuts have reached the desired slots in the track.
4. Tighten the T-Nuts and screws firmly by hand so they do not come loose over time so they are not misplaced.

5.2 DETACHING YOUR SONAR FOIL SYSTEM FROM THE NORTH SENSE OR CHASE

1. Whilst supporting the foil system, use the Torx T40 tool provided in the Tool Kit to individually loosen the four screws in a diagonal sequence. Once all four screws are completely loose, remove them and separate the foil system from the board.
2. Carefully and securely set the foil system aside.
3. Store screws in a safe place or tighten them back onto the board.

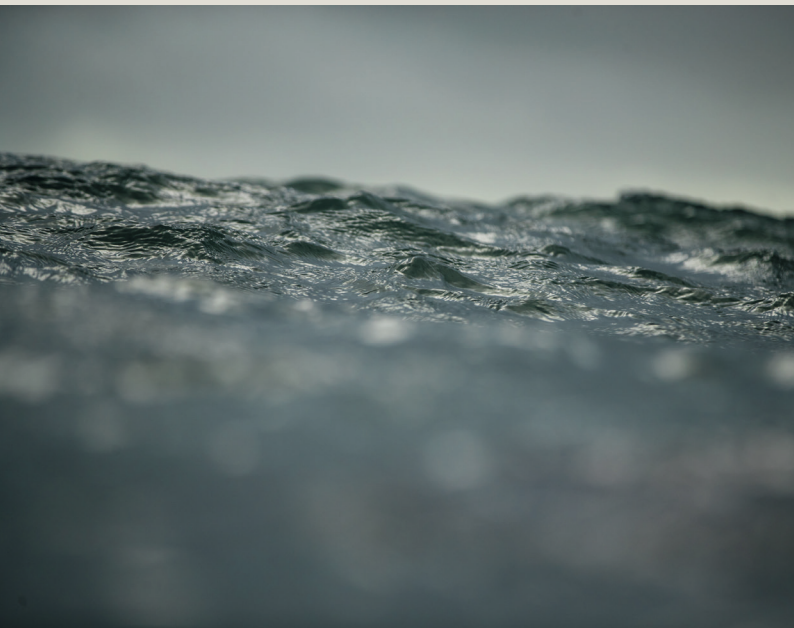
6. BOARD CARE

- Wash your North board in fresh water thoroughly after each use.
- Use Recommended North Kiteboarding fins, foot straps and Accessories.
- Check your board prior to each use. Ensure screws are tight and there are no cracks, holes or scratches which could compromise your boards structure.
- If you find any damage make sure damage is sealed and fixed properly before further use.
- Do not over tighten screws as they are subject to extreme loads. Screw tightness should be checked regularly.
- Avoid unnecessary sun exposure to your board.
- Avoid exposure to hot temperatures such as inside an unventilated car. Store board in temperatures not exceeding 45 degrees Celsius.
- Store your North kiteboarding board in a board bag to prevent unnecessary sun exposure, scratches and other wear and tear while the board is not in use.

NOTE: It is normal for tea stains to appear on stainless steel parts. This is due to a chemical reaction which occurs with the best of materials. Tea stains do not affect the structural integrity of the connection between the foil and board.

7. SERIAL NUMBER

On the North Chase and Scoop the serial number can be found at the tail on the base of the board. For the North Sense the serial number can be found on the base in between the 4 point foil mount system. PLEASE REFER TO OVERVIEW ON PAGE 10.



N O R T H K B . C O M